



MONTHLY MEMBERSHIP PROGRESS REPORT

District 126

Results as of: 6/30/2017

GMT: OPEN

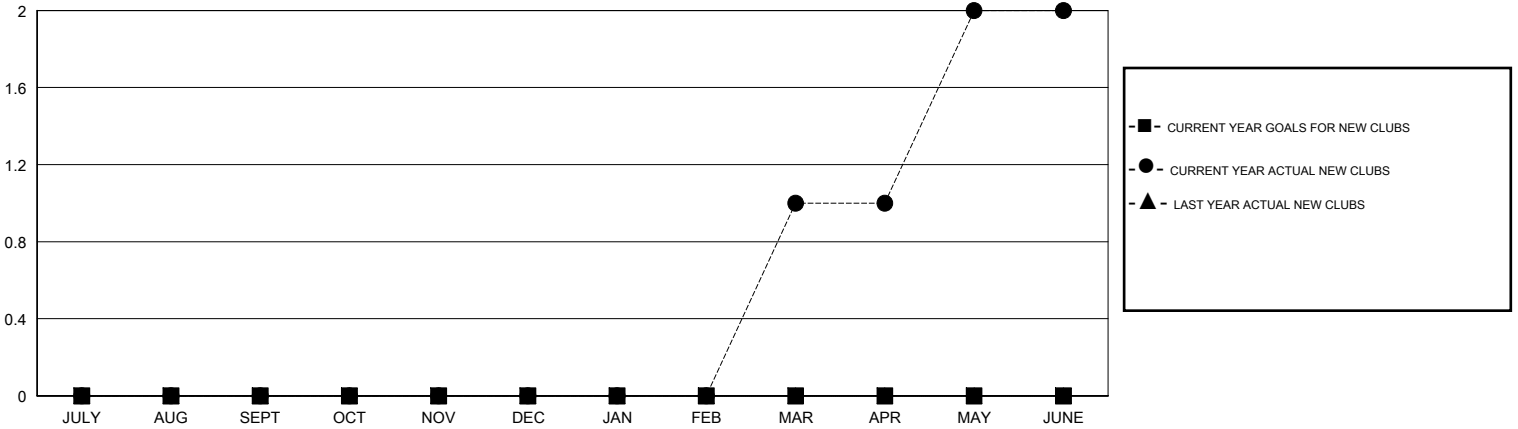
LOCATION CROATIA

GMT CA

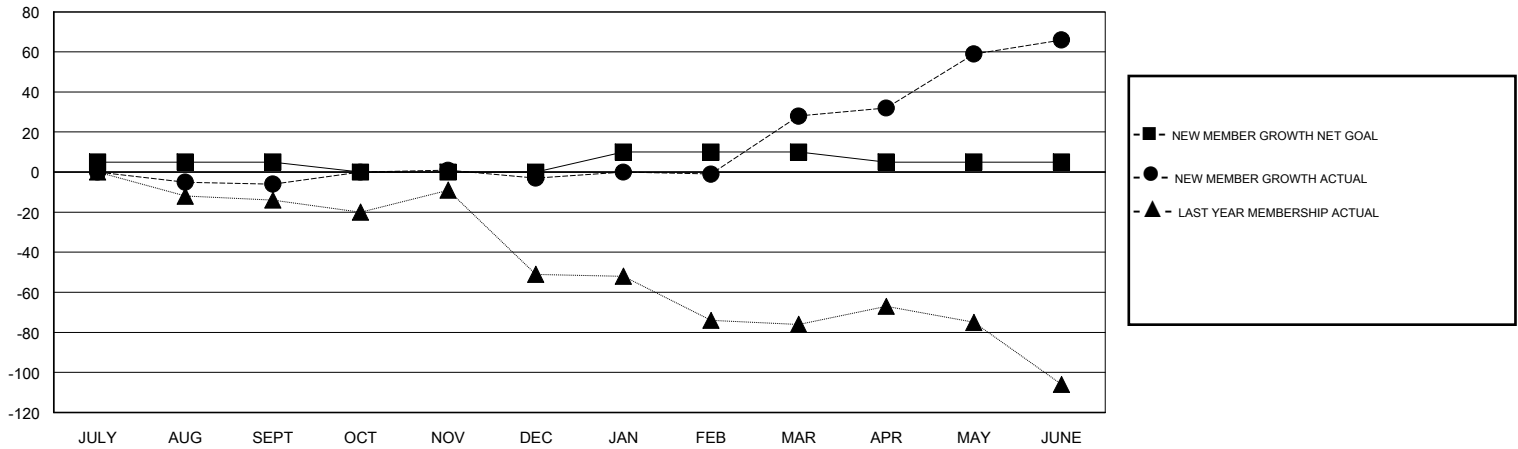
Clubs			
RESULTS FOR 2016-2017			
QUARTER	NEW CLUB GOAL	NEW CLUBS	DROPPED CLUBS
JULY/AUG/SEPT	0	0	0
OCT/NOV/DEC	0	0	0
JAN/FEB/MAR	0	1	0
APR/MAY/JUNE	0	1	0

Members			
RESULTS FOR 2016-2017			
QUARTER	NEW MEMBER GROWTH NET GOAL (not reinstated or transfers)	NEW MEMBER GROWTH ACTUAL (not reinstated or transfers)	DROPPED MEMBERS ACTUAL (including transfers)
JULY/AUG/SEPT	5	12	18
OCT/NOV/DEC	-5	19	16
JAN/FEB/MAR	10	51	20
APR/MAY/JUNE	-5	88	50

GOALS AND ACTUAL NEW CLUBS CUMULATIVE



GOALS AND ACTUAL MEMBERS CUMULATIVE



DROPPED CLUBS: 0	36 CLUBS OF 58 ADDED 1 OR MORE NEW MEMBERS	GENDER DISTRIBUTION
		MALE 619 (51.97%)
		FEMALE 572 (48.03%)
DROPPED MEMBERS	CLICK HERE FOR CUMULATIVE MEMBERSHIP DATA	TOTAL FAMILY UNIT MEMBERS 25
DECEASED 6		FAMILY MEMBERS PAYING HALF DUES 13
CLUB CANCELLED 0		
OTHER 99		
TOTAL 105		